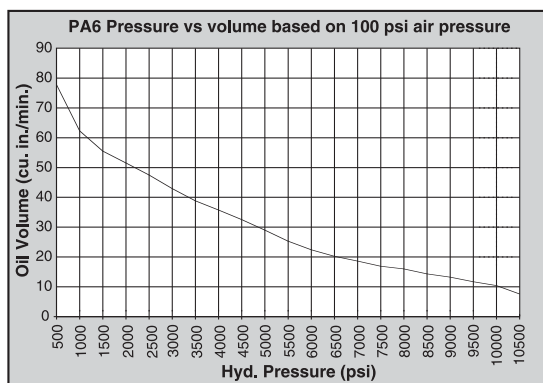


# AIR PUMP

## Hydraulic PA6 Series Single-Acting

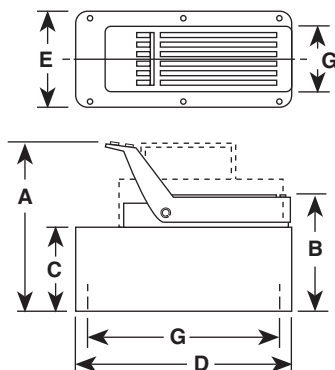
**COMPACT, LIGHTWEIGHT AND PORTABLE. SINGLE-SPEED PUMPS DESIGNED TO DRIVE SINGLE-ACTING CYLINDERS.**

- The power unit of choice for major manufacturers of auto body, frame straighteners and other equipment.
- Operate at 40-100 psi shop air pressure at the pump.
- dBA 85 at 10,000 psi.
- Serviceable pump motor is not a "throw away," providing economical repair.
- Permanently vented reservoir cap.
- Internal relief valve protects circuit components, air inlet filter protects motor.



PA6

10,000 psi



Pump No.	A (in.)	B (in.)	C (in.)	D (in.)	E (in.)	G (in.)
PA6	7 <sup>3</sup> / <sub>4</sub>	5 <sup>7</sup> / <sub>8</sub>	4 <sup>3</sup> / <sub>8</sub>	9 <sup>1</sup> / <sub>2</sub>	5	4 x 9
PA6A	7 <sup>3</sup> / <sub>4</sub>	5 <sup>7</sup> / <sub>8</sub>	4 <sup>3</sup> / <sub>8</sub>	9 <sup>1</sup> / <sub>2</sub>	5	4 x 9
PA6AM	7 <sup>3</sup> / <sub>4</sub>	5 <sup>7</sup> / <sub>8</sub>	4 <sup>3</sup> / <sub>8</sub>	9 <sup>1</sup> / <sub>2</sub>	5	4 x 9
PA6M	7 <sup>3</sup> / <sub>4</sub>	5 <sup>7</sup> / <sub>8</sub>	4 <sup>3</sup> / <sub>8</sub>	9 <sup>1</sup> / <sub>2</sub>	5	4 x 9
PA6R	7 <sup>3</sup> / <sub>4</sub>	5 <sup>7</sup> / <sub>8</sub>	4 <sup>3</sup> / <sub>8</sub>	9 <sup>1</sup> / <sub>2</sub>	5	4 x 9
PA6RM	7 <sup>3</sup> / <sub>4</sub>	5 <sup>7</sup> / <sub>8</sub>	4 <sup>3</sup> / <sub>8</sub>	9 <sup>1</sup> / <sub>2</sub>	5	4 x 9
PA6M-1	7 <sup>7</sup> / <sub>8</sub>	6	4 <sup>3</sup> / <sub>8</sub>	12 <sup>5</sup> / <sub>8</sub>	7 <sup>3</sup> / <sub>8</sub>	—
PA6-2	10 <sup>1</sup> / <sub>4</sub>	8	7	11 <sup>1</sup> / <sub>2</sub>	9 <sup>1</sup> / <sub>2</sub>	5 <sup>1</sup> / <sub>8</sub> x 7 <sup>1</sup> / <sub>8</sub>
PA6M-2	10	7 <sup>3</sup> / <sub>4</sub>	6 <sup>3</sup> / <sub>4</sub>	11 <sup>1</sup> / <sub>2</sub>	9 <sup>1</sup> / <sub>2</sub>	8 x 10



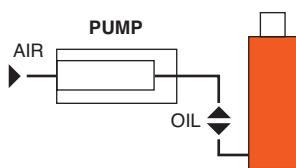
PA6M-1



PA6-2



**Typical Set-up  
Hook-up for single-acting cylinders**



Description	Order No.	Air Supply	Reservoir		Oil Port (in)	Prod. Wt. (lbs.)
		Req'd (psi)	Cap. (cu. in.)	Usable (cu. in.)		
Base model pump with high density polyethylene reservoir.	<b>PA6</b>	40-120	105	98	$\frac{3}{8}$ NPTF	14
PA6 with externally adjustable relief valve.	<b>PA6A</b>	40-120	105	98	$\frac{3}{8}$ NPTF	15
PA6A with metal reservoir.	<b>PA6AM</b>	40-120	105	98	$\frac{3}{8}$ NPTF	17
PA6, except has metal reservoir.	<b>PA6M</b>	40-120	105	98	$\frac{3}{8}$ NPTF	18
PA6 with 12 foot remote control.	<b>PA6R</b>	40-120	105	98	$\frac{3}{8}$ NPTF	20.58
PA6R, except has metal reservoir.	<b>PA6RM</b>	40-120	105	98	$\frac{3}{8}$ NPTF	21.58
PA6, except has 1 gallon metal reservoir.	<b>PA6M-1</b>	40-120	1 gal.	185	$\frac{3}{8}$ NPTF	23.7
PA6, except has 2 gallon, high density polyethylene reservoir.	<b>PA6-2</b>	40-120	2 gal.	454	$\frac{3}{8}$ NPTF	24.5
PA6, except has 2½ gallon metal reservoir.	<b>PA6M-2</b>	40-120	2½ gal.	570	$\frac{3}{8}$ NPTF	32.1