



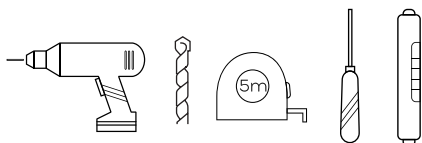
# INSTALLATION INSTRUCTIONS



*ErgoSlideBar*

4001R-SSP  
4001R-SSB  
4001R-ORB  
4001L-SSP  
4001L-SSB  
4001L-ORB

## TOOLS REQUIRED FOR INSTALLATION



Electric Drill  
1/8" wood or metal drill bit  
5/16" masonry drill bit  
Tape measure  
Screwdriver  
Level

## IMPORTANT

Check local code for proper placement of ErgoSlideBar to meet requirement such as ADA or ANSI 117.1 Consumer Safety Requirements.

**ERGOSLIDEBAR CAN BE MOUNTED THROUGH SHOWER WALL AND SCREWED DIRECTLY TO WOOD OR METAL STUD WHEN APPLICABLE.**

## INSTALLATION QUESTIONS

Before returning your ErgoSlideBar to the store or have any question about installation or missing parts please visit the CUSTOMER CARE area on our website [www.PulseShowerSpas.com](http://www.PulseShowerSpas.com).

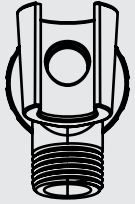
### WARRANTY

Please visit [www.PulseShowerSpas.com](http://www.PulseShowerSpas.com) for our Manufacture's Lifetime Limited Warranty information.

## PARTS INCLUDED

- Stainless steel rail
- 3 Function handheld with flow control
- 72" Shower hose
- Installation manual
- Shower arm mount with hand held holder
- Hand held slider

## SHOWER ARM MOUNT INSTALLATION



Attach shower arm mount to your existing shower arm using supplied washer. Shower arm NOT INCLUDED.

## INSTALLATION

### STEP 1

Position mounting flanges and mark hole locations.

For wood or solid backing applications drill 1/8" pilot holes through shower wall into wood or metal stud.

NOTE: If wall is tiled, drill a 1/8" pilot hole through tile then change to the a 5/16" diameter masonry tile drill bit.

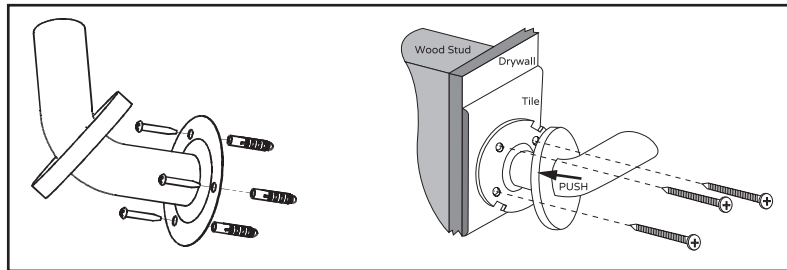
### STEP 2

Install screws through mounting flange and directly into wood/metal stud or bracing. Use masonry anchors if necessary.

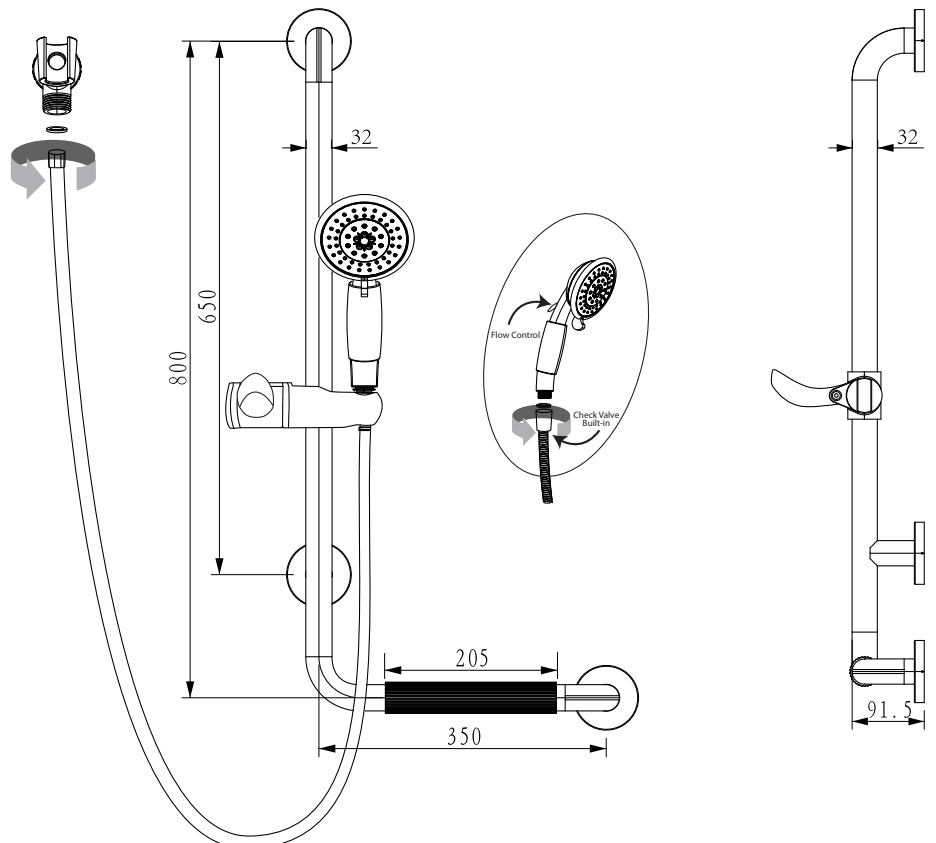
### STEP 3

Once the ErgoSlideBar is securely fastened to wall, align cover plate locking tabs with slots in flange. Push cover against mounting until it locks.

## DETAIL MOUNTING INSTALLATION



## PRODUCT DIMENSIONS



Toll Free: 888.785.7320  
www.PulseShowerSpas.com

