

Safe-T™ Ladder Gate

Part #: 10798

Compliant with all OSHA 1910 and OSHA 1926 Subpart M regulations.

Safe-T™ Ladder Gate is suitable for the following application:



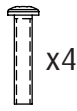
Safe-T™ Ladder Gate may only be used in combination with a compatible ladder in Fall Prevention applications. Fall Prevention Systems are placed around the leading edges of any and all fall hazards to prevent a worker from going over an edge. Installation requirements for Safe-T™ Ladder Gate must be adhered to. Personal Fall Arrest, Work Positioning, Rescue, and any other systems must NEVER be connected to Fall Prevention Systems.

Materials: powder-coated aluminum.

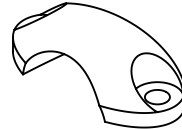
Not repairable by the manufacturer.

Components:

- (4) Allen Screws (4mm or 5/32")
- (2) Brackets
- (1) Safety Ladder Gate



x4



x2



Shown installed on Safe-T™ Ladder (#10800)



Always adhere to ladder slope requirements (4/1, vertical/horizontal).

Top rung step of ladder must be in line with landing platform.

Top of Safe-T™ Ladder Gate MUST be 42" (+/- 3") above walking surface.

Ladder MUST be secured to landing platform to use Safe-T™ Ladder Gate.

Only use ladder on stable and level surfaces.

One hand must always grasp a ladder rung during climbing.

NEVER carry loads that may cause loss of balance.

MAXIMUM 1 user per ladder at any time.

UPC-A Code: 672421107981.